

Project No.: 058
Interior designers: 100% interior
web page: www.100interior.de
Photos: 100% interior Sylvia Leydecker/photographer Karin Hessmann

box will be removed before print

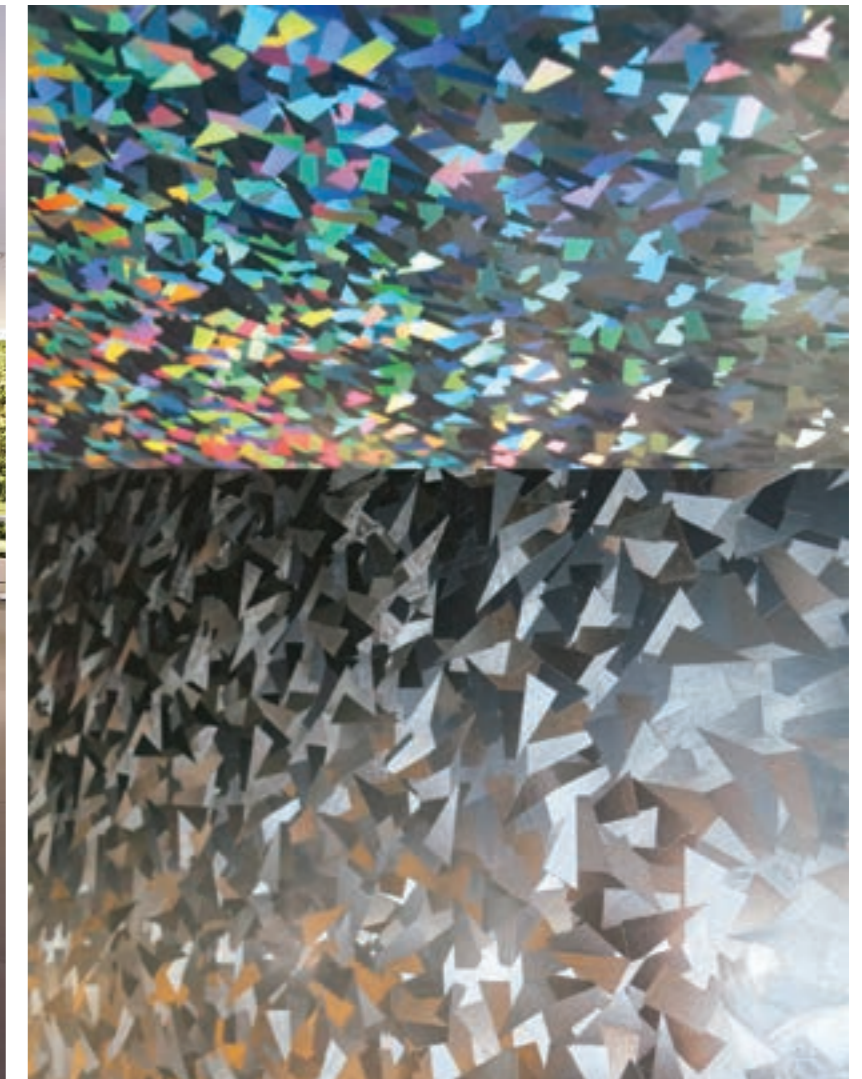


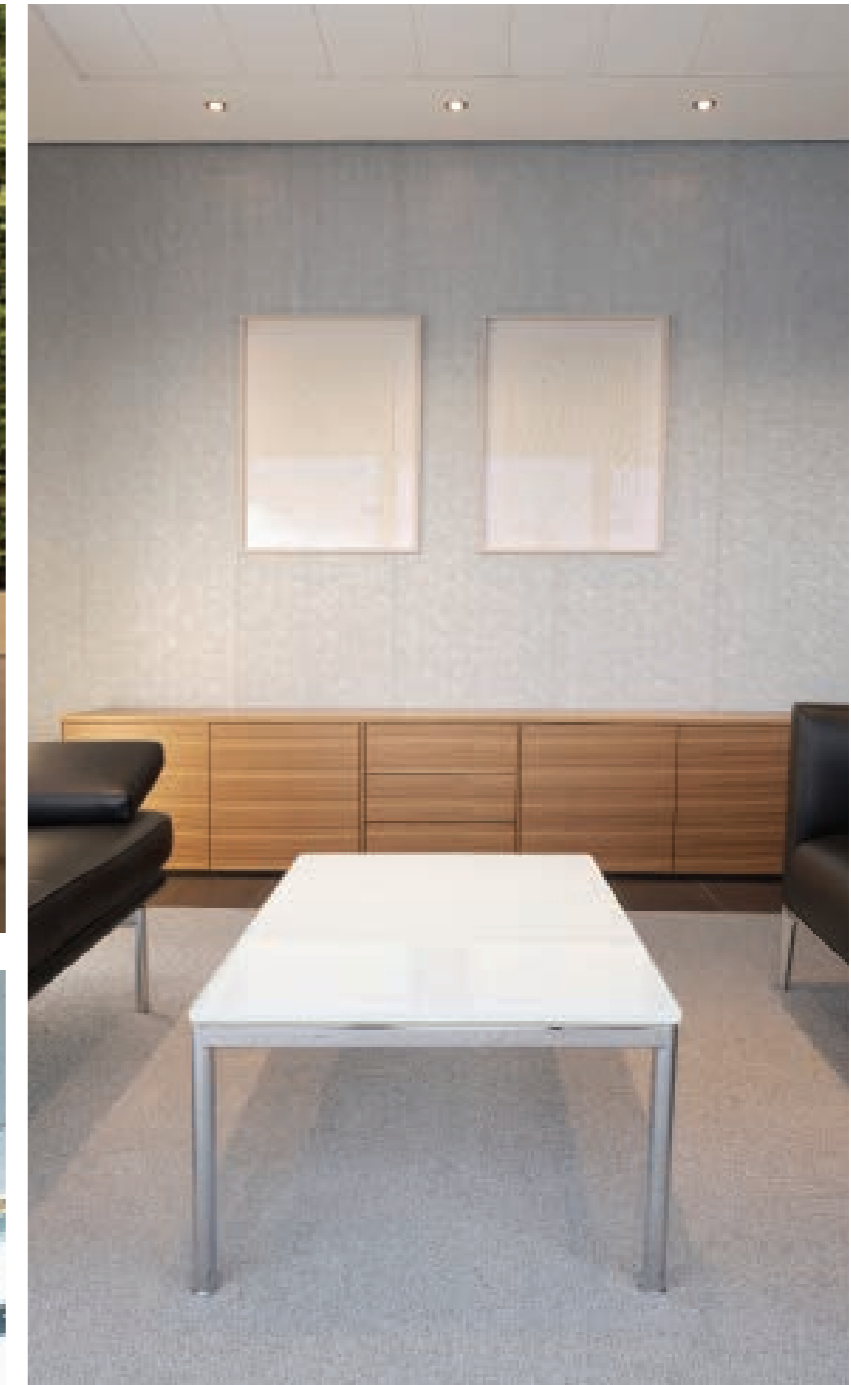
F & S SOLAR CONCEPT



Interior Design | 100% interior Sylvia Leydecker
Address | Otto-Lilienthal-Straße 34, 53879 Euskirchen, Germany
Client | F & S solar concept
Company industry | solar technology
Gross floor area | 1,700 m²
Completion | 2012

The interior architecture of this new 1,700-square-meter administration building reinforces the unique identity of this international photovoltaic project developer. The carefully selected materials are of extremely high quality and include solid wood, real leather, glass and stoneware. Featuring a communal bar, benches and tables, the foyer simply emanates team spirit. The managers' offices provide the ideal framework for important meetings. The tailor-made design reflects the ideals and company values of F&S and is not intended to be fashionable for just a short time, but rather to offer a timeless and sustainable environment.





SPOTLIGHT

Inspiration for this design was drawn from the material silicon. Silicon is the starting material for the production of solar modules and strongly influenced the color and material concept. The iridescent, layered surfaces feature many of the characteristics specific to silicon and create a dynamic contrast to the solid wood and anthracite. The refraction of light changes its appearance and perspective, creating an almost film-like scenario.

- 20 m² double offices
- 70 m² meeting rooms offices
- 50 m² management meeting room
- 400 m² lobby