

# When a Factory Becomes a Home

Chris  
van Uffelen

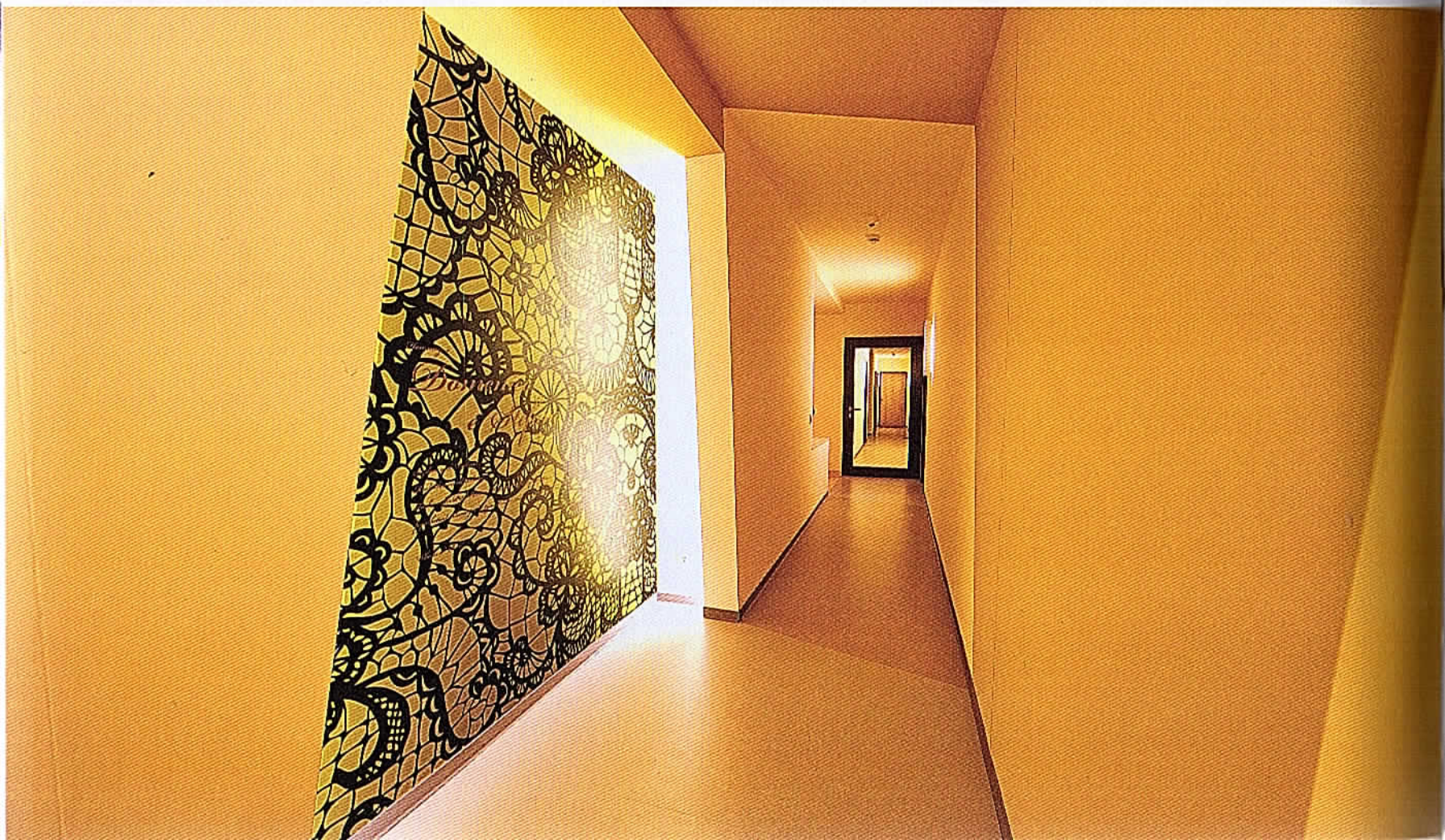
Adaptive  
Reuse for  
Living

BRAUN

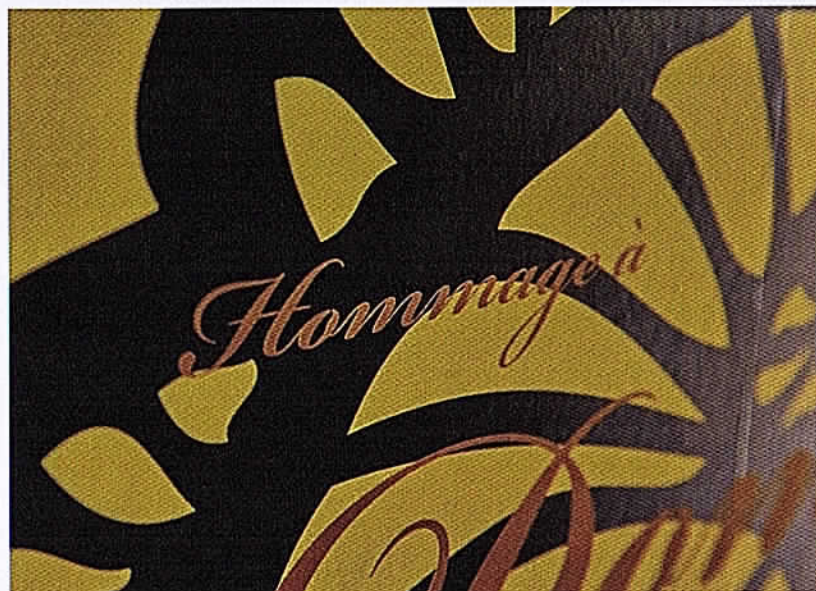
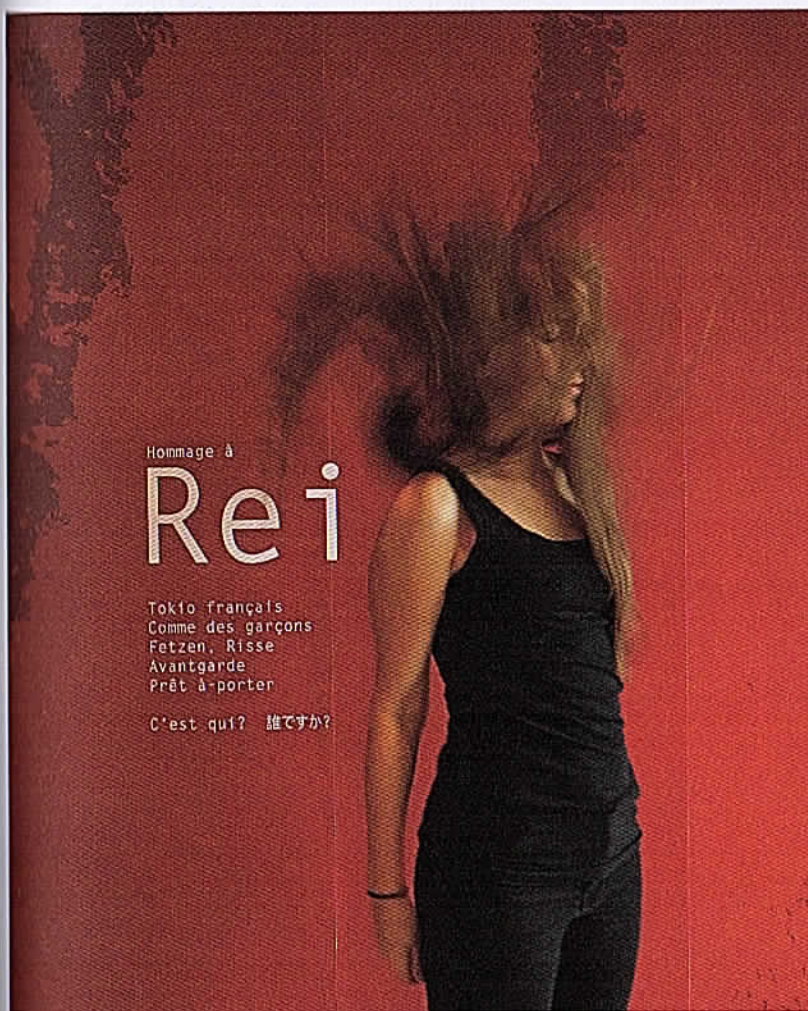


Unknown → 2014

The Office Complex  
Transformation  
demonstrates  
the metamorphosis  
of a former  
demure building  
into a trendy  
lifestyle ensemble.





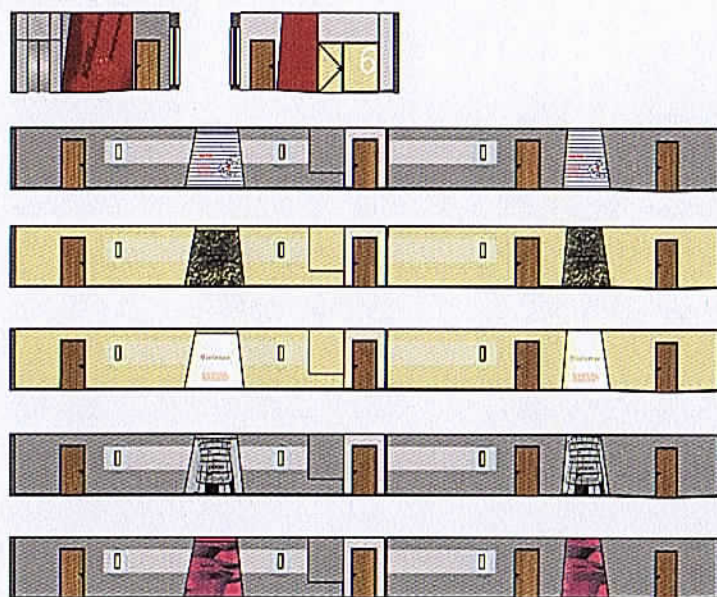


In order to transform this former office complex into attractive apartments, it was necessary to give the narrow and sober corridors a complete makeover. The design establishes a colorful band that stretches over the floors, walls and ceilings. The colors range from pink, orange and red, to blue and white stripes, warm gold and deep red. A change of color on the floor subtly simulates daylight. The unique wall designs are inspired by the stories of famous fashion designers, thus forging a connection to the fashion context of this apartment building in Dusseldorf. The design pays homage to prominent fashion designers such as Issey Miyake and Vivienne Westwood. The use of modular systems improved the economic feasibility of the design.

Architect 100% interior Sylvia  
Leydecker **Completion** 2014  
Original building Office building  
Address Dusseldorf, Germany

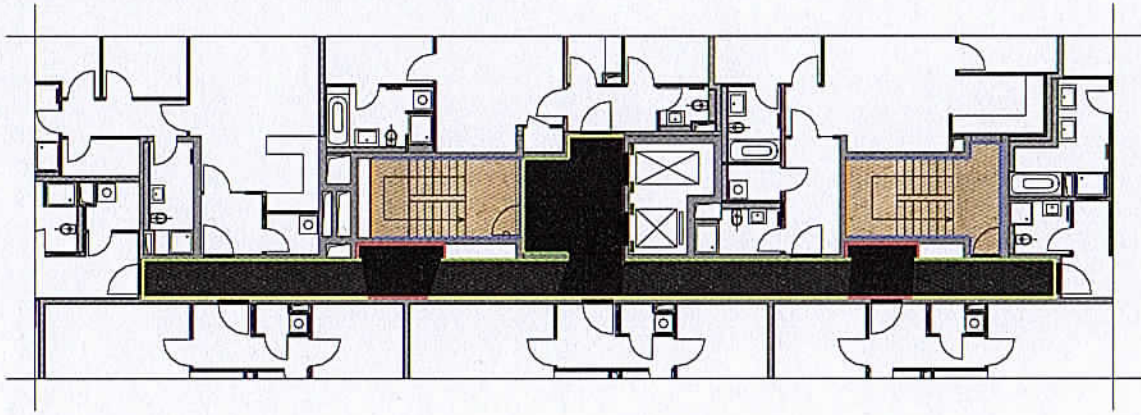




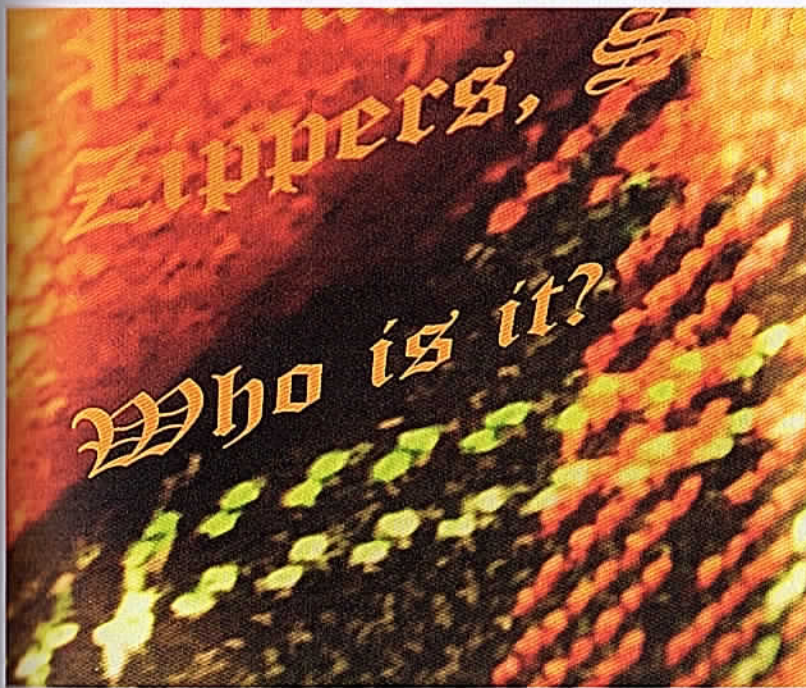


Floor sections





Ground floor plan



By creating individual wall designs, a vivid framework has been established, suitable for contemporary living concepts in an environment dedicated to fashion and design.